



***BluLub***®

***B O R N   T O   P E R F O R M***

***Movex***®

[www.movexii.com](http://www.movexii.com)

# BluLub®

PERFORMANCE & INNOVATION



## Low Friction

Lowest coefficient of friction compared to traditional materials.



## High Performance

Extreme material performances with high speeds and loads.



## Low Energy

Minimized energy consumption.



## Long Wear Life

Longer wear life and reduced moisture absorption.



## Low Noise

Reduced noise and squeaking level.



## Best Lubricant

Consistently lubricant distribution over the entire surface.

**Movex®**

## We extrude it, we machine it, we mold it.

**BluLub®** is the Movex super-performance compounded Ultra High Molecular Weight Polyethylene material, with the latest generation of solid lubricants, able to contribute improving PV-properties (limiting pressure velocity) compared to standard UHMW-PE, especially in applications with limited lubrication, higher speeds and/or higher loads.

**BluLub®** ensures high wear and abrasion resistance, requires less energy and with the lowest coefficient of friction, improves the product stability and wear life of sliding parts.

Thanks to the **BluLub®** characteristics, extruded, machined and molded parts can also offer a longer wear life, compared to traditional materials, and will help reducing marks over products.

**BluLub®** is ideal for extreme conditions in terms of load and speed.

### Material properties:

#### UHMW-PE Polyethylene:

with molecular density  
9.200.000 g /mol.

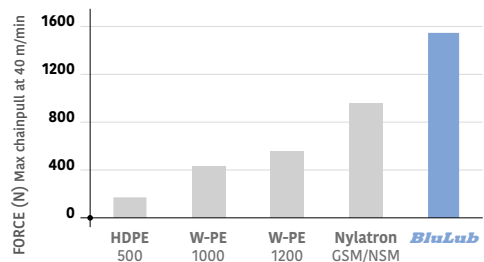
#### Operating temperature:

-40 to + 80°C (-40 to 176°F)

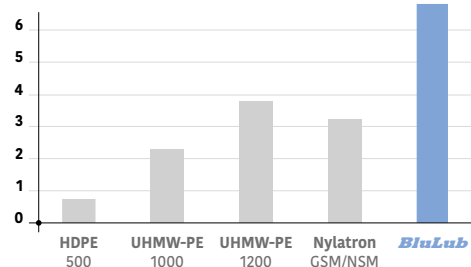
#### Linear expansion coefficient:

$2 \times 10^{-4} \text{ } ^\circ\text{C}^{-1}$  ( $1.1 \times 10^{-4} \text{ } ^\circ\text{F}^{-1}$ )



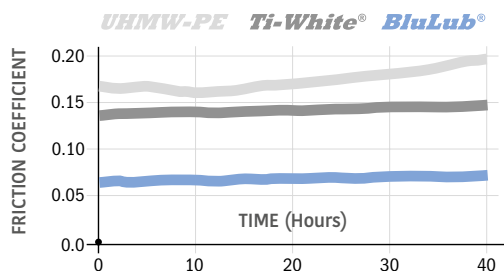


**PV LIMIT**  
Comparison table



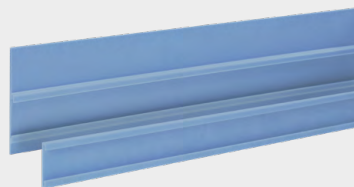
**RELATIVE WEARLIFE**  
Comparison table

**BluLub®** is available for any type of Movex Curves, Extruded Profiles, NoseBars, standard or custom as well as many molded components.



**FRICTION**  
Comparison table

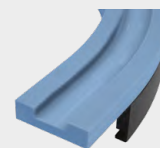
## EXTRUDED PROFILES



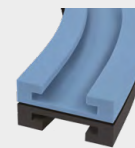
**BluLub®** is ideal for extruded profiles. With more than 50 extrusion machines, we can produce more than **2.000 high-quality products**, ideal for many different applications. Thanks to the unique solid lubricants added into the material, the sliding properties are excellent and the energy consumption will be reduced.



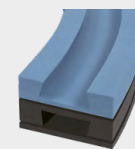
## MACHINED CURVES



**Magnetic**



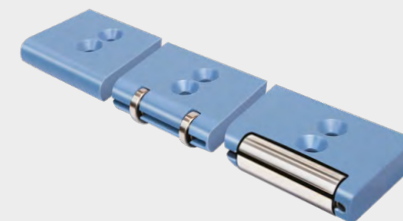
**TAB**



**Bevel**

**BluLub®** is ideal for machined **Magnetic**, **TAB** and **Bevel** curves as well as custom sliding curves and profiles. Thanks to our 5-axis CNC's, we can provide best performances for all of our machined parts.

## NOSEBARS

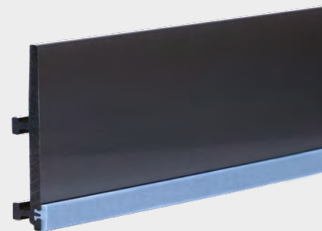


**BluLub®** is the best material for available NoseBars, the best solution for a combination of short transfer and high performance, letting your line:

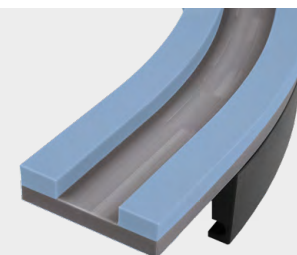
- Running with limited maintenance
- Exceeding in performances
- Achieving high speeds and loads

**There are 3 different types available:**

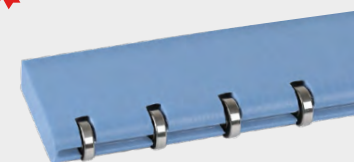
- **Standard:** reducing dust and the frequency of maintenance.
- **with Bearing:** guaranteeing a longer life compared to traditional ones, specifically for high-speed applications.
- **with Rollers:** increasing the efficiency of the processing line, specifically for heavy load and abrasive applications.



**RS Side Guide Rail**



**RS Curves**



**One Piece**



### **Movex around the world**

#### **Movex GmbH**

P +49-6204-9375-0

#### **Movex Brasil Ltda**

P +55-15-3141-2550

#### **Movex France**

P +39-335-8085980

#### **Movex AG India**

P +91-120-4159660-62

#### **Movex Russia**

P +7 (495) 925-88-56

#### **Movex UK Ltd.**

P +44-77-20678442

#### **Movex Nederland**

P +31-630-994850

#### **Movex USA Inc.**

P +1-919-274-5477

#### **Movex SA de CV**

P +52-1-331845818

#### **Movex Ukraine**

P +380-667507756

### **Movex S.p.A.**

#### **Headquarter**

Viale Industria, 22 - 24060  
Castelli Calepio (BG) Italy

#### **Logistics center**

Via Repubblica, 25 - 24060  
Castelli Calepio (BG) Italy